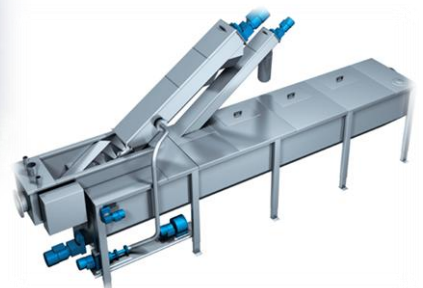
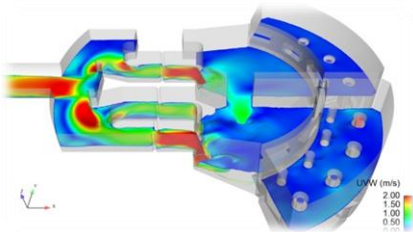
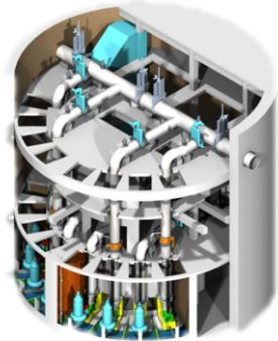


Petroplan Engineering Co. Ltd



WWW.PETROPLAN.RU

197341, Kolomiagky 33, St. Petersburg, Russia ☎ +7 (812) 633-03-43, 633-03-44, ref@petroplan.ru



Flygt Exporior™

Company profile 2015



Petroplan Engineering Co. Ltd was founded in year 2002 as private and independent designing and consulting company. The company is registered in Saint-Petersburg on Kolomiagsky prospect, 33.

Petroplan Engineering Co. Ltd provides designing and consultancy services in field of architecture, construction, water supply, water removal, protection of environment, municipal improvement, technical supervision and construction audit, as well as elaborates documentation for manufacturing prefabricated pumping stations and equipment for municipal improvement. The Company also delivers process equipment. **Petroplan Engineering Co. Ltd** has in property several patents and know-how on the basis thereof other enterprises manufacture industrial production for municipal needs. Among such trademarks we can mention registered trademark **TKM ®** and **FLYTEK ®**, defending developments, belonging to the Company.



Petroplan Engineering Co. Ltd is a permanent member and consultant of Technical Committee TK 455 of Department of **National Standardization of Russia** (GOSSTANDART) and participates in elaboration of National standards in the field of municipal infrastructure and improvement. **Petroplan Engineering Co. Ltd** has all State licenses and admissions on activity in sphere of designing and construction.

Since year 2002 to year 2005 года **Petroplan Engineering Co. Ltd** was Plancenter Ltd (Finland) sub consultant for projects performed in Russia in the network of international financing programs. Among such projects we can mention such as Water Supply and Water Removal Development in Pechora, technical supervision in the international project of construction and rehabilitation of the Sestroretsk WWTP in Leningrad district, and international project of Vologda water supply system reconstruction. In these projects **Petroplan Engineering Co. Ltd** participated on different stages: from the feasibility study to the detailed design study, preparation of international bidding documentation and construction supervision.

In the network of international projects, **Petroplan Engineering Co. Ltd** has also participated as Plancenter Ltd sub consultant in technological projects on chemical phosphorous removal on Saint-Petersburg WWTP. In 2003 project «A Study for Conditioning of the Municipal Solid Waste Landfill in the City of Adler (Russia)» was executed together with Plancenter Ltd, and the latest was acted as a sub-consultant for **Petroplan Engineering Co. Ltd**. on the technology of reclaiming, collection and disposal of biogas. Plancenter Ltd was **Petroplan Engineering Co. Ltd**. sub consultant for technological projects of ferric and manganese removal from potable water. Projects were elaborated for SUE Vodokanal of Saint-Petersburg.

In year 2006 **Petroplan Engineering Co. Ltd** has elaborated program of dispatching water-supply system of Saint-Petersburg.

Now-a-day the Company develops only independent policy and activity in field of designing and cooperates with Russian and European designing and technological companies. The Company realizes water supply and sewerage as well as municipal engineering projects in Russia and in North-Western Region thereof.

In the course of its activity the Company proved the efficient combination of the Russian know-how with the latest cutting-edge technology from western countries.



In year 2006 **Petroplan Engineering Co. Ltd** won an international tender on designing of Waste Water Treatment Plant in Electrostal (Moscow district). This project was executed by the Company independently and has received the State Approval from the State Independent Expertise Board and recommended for construction works in year 2009. All cutting-edge technological decisions from **ITT Industries**, including **FLYGT, Sanitaire, Wedeco** etc. were implemented in this project that, in turn, basing on technological novelties from **ITT Industries** considered to be the pilot one in the Central part of the Russian Federation. Currently all rights for the project belong to **Petroplan Engineering Co. Ltd** and will be transferred to the Customer of the project - **EPOS Co.ltd**

One more large project executed by **Petroplan Engineering Co. Ltd** in Saint-Petersburg during years 2006- 2009 is the project of **BaltNefteProvod Co. Ltd** headquarter office in the center of Saint-Petersburg. Project of this office involves the most contemporary decisions in engineering and construction designing.

In year 2003 **Petroplan Engineering Co. Ltd** was invited to assist the **ITT FLYGT AB** distributor in Moscow, Russia to strengthen positions of **FLYGT** brand in the Northern-Western Region of the Russian Federation. To reach this target regional office of the **ITT FLYGT AB** official distributor of was opened on a basis of **Petroplan Engineering Co. Ltd**. Since then the Company acts as a supplier of Xylem equipment, supplier of prefabricated pumping stations from fibreglass as well as designer of sewage and water supply and removal systems basing on experience and recommendation of Xylem specialists and specialists from Russian partnership companies in abovementioned sphere.

Today **Petroplan Engineering Co. Ltd** is independent design-technological consultant and partner of Xylem WaterSolutions AB in the NW region of Russia and member of the worldwide TRACE association. Mutual interests are elaboration, promotion of projects in sphere of construction and reconstruction of pumping stations, treatment plants. Designing and manufacturing of prefabricated pumping station **FLYTEK** ® is based on process elaborations of **FLYGT** standards which is currently Xylem Inc.).

Company is the official distributor of companies Conpura, Spirac (Sweden, mechanical equipment for WWTPs), Franklin Miller (USA, screens-choppers, equipment for screenings treatment), Atlas Copco, compressors for aeration systems etc.

Information about company as official partner is published on websites:

<http://www.xylemwatersolutions.com/scs/russia/en-us/local%20contacts/Pages/default.aspx>

<http://www.conpura.se/samarbetspartners.html>

Today **Petroplan Engineering Co. Ltd** clients are different industrial and municipal companies that use Xylem range of equipment. It is possible to mention among main Clients such enterprises as: SUE Vodokanal of Saint-Petersburg and cities of the NW region, Russian branches of well-known European enterprises as Philip Morris Izhora, YIT-Lentek, Nokian Tyres, Dirol Cadbury, Mondi Business Paper and many other leading Russian Stock enterprises like Arkhangelsk Pulp and Paper Plant, European sulphur terminal, Rosterminalugol, Kirishinefteorgsintez, Rubin-Leasing.



Main and most significant projects and objects elaborated by Petroplan Engineering Co. ltd 2002-2014

Client	Object	Scope of work
Rosterminalugol PLC (Saint-Petersburg)	Coal terminal of sea trading harbor in Ust-Luga	-Calculation and designing of prefabricated pumping station with FLYGT equipment -Delivery of equipment to the object, manufacturing of the pumping station in accordance with approved drawings
Vodokanalstroy CJSC (Saint-Petersburg)	-South pumping station of Saint-Petersburg - Valaam monastery - Main collector of Saint-Petersburg - Factory «Nevsky solod» in Metallostroy	-Delivery of process equipment for pumping station and sewage systems -Calculation and designing of prefabricated pumping station with FLYGT equipment -Delivery of equipment to the object, manufacturing of the pumping station in accordance with approved drawings
Stroytehgaz Ltd (Saint-Petersburg)	Second turn of constriction of Ring Road around the Saint-Petersburg	-Calculation and designing of prefabricated pumping station with FLYGT equipment -Delivery of equipment to the object, manufacturing of the pumping station in accordance with approved drawings
Intermach and Co CJSC (Ekaterinburg)	Prefabricated pumping station for municipal object in city of Revda (Sverdlovsky district)	-Calculation and designing of prefabricated pumping station with FLYGT equipment -Delivery of equipment to the object, manufacturing of the pumping station in accordance with approved drawings
USAR Ltd (Rostov-on-Don)	-Petroleum refinery in Novoshahtinsk -Lenta-6 in Rostov-on-Don -Several municipal objects	-Calculation and designing of prefabricated pumping station with FLYGT equipment -Delivery of equipment to the object, manufacturing of the pumping station in accordance with approved drawings
Renaissance Construction (Moscow)	-Trade complex «Belaya dacha» (with MEGA, IKEA, Ashan shops) in Moscow	-Calculation and designing of prefabricated pumping station with FLYGT equipment -Delivery of equipment to the object, manufacturing of the pumping station in accordance with approved drawings
VINCI Construction Grand Project (Saint-Petersburg)	-Trade complex «Raduga» in Saint-Petersburg	-Reconstruction of incorrectly calculated and delivered pumping station with replacing all equipment to new one -Calculation and designing of prefabricated pumping station with FLYGT equipment -Delivery of equipment to the object, manufacturing of the pumping station in accordance with approved drawings
Rosatomstroy	-Local municipal objects	-Reconstruction of incorrectly calculated and delivered pumping station with replacing all equipment to new one -Calculation and designing of prefabricated pumping station with FLYGT equipment -Delivery of equipment to the object, manufacturing of the pumping station in accordance with approved drawings



European sulfur terminal (Saint-Petersburg)	-Sulfur terminal of sea trading harbor in Ust-Luga	-Calculation and designing of prefabricated pumping station with FLYGT equipment -Delivery of equipment to the object, manufacturing of the pumping station in accordance with approved drawings
EPOS plus Ltd (Rostov-on-Don)	-Semikarakorsk (Rostov-on-Don district) sewage system (15 prefabricated pumping stations)	-Calculation and designing of prefabricated pumping station with FLYGT equipment -Delivery of equipment to the object, manufacturing of the pumping station in accordance with approved drawings
Sodruzhestvo Ltd (Saint-Petersburg)	-Objects in Vyborg part of Russian railway system (for RZhD)	-Calculation and designing of prefabricated pumping station with FLYGT equipment -Delivery of equipment to the object, manufacturing of the pumping station in accordance with approved drawings
Polyakov group Ltd (Perm)	-Airport «Bolshoye Savino»	-Calculation and designing of prefabricated pumping station with FLYGT equipment -Delivery of equipment to the object, manufacturing of the pumping station in accordance with approved drawings
Eaststroy (Moscow)	-Domestic buildings in Dolgoprudny city in Moscow district	-Calculation and designing of prefabricated pumping station with FLYGT equipment -Delivery of equipment to the object, manufacturing of the pumping station in accordance with approved drawings
Electrosnabkomplekt (Moscow)	- Sewage system of Pochep city in Bryansk district	-Calculation and designing of prefabricated pumping station with FLYGT equipment -Delivery of equipment to the object, manufacturing of the pumping station in accordance with approved drawings
Vodokanalstroy CJSC (Saint-Petersburg)	Main sewage collector of Saint-Petersburg pumping system from depth 100 m	Elaboration of technical solution based on Flygt equipment. delivery of equipment in acc. with elaborated documentation, supervision
Electrostal Enterprise of WWTPs	Working design of Electrostal WWTP (30 000 m ³ /day)	Complex designing of WWTP based on equipment of ITT Industries. Approval of the state expertise body. Construction year 2010. Field supervision.
Baltnefteprovod Transneft	Working design of administrative building of TRANSNEFT	Complex 3 stage designing of all documentation. Approval of the state expertise body. Construction year 2010. Field supervision.
Plancenter Ltd.	Reconstruction of water supply objects in Pechora. Second line of main conduit.	Complex designing
Lenmetrohydrotrans	Pre-design work. Concept of reconstruction of waste storage in Adler.	Complex designing in association with Plancenter Ltd.
SUE LenGiproIngProjekt	Water intake and main conduits of water supply from Ladoga lake. Hydraulic calculations.	Complex designing
Agency Vasilievsky Island	Outer nets of water supply and sewage systems.	Complex designing

Rosstroy	Temporary water supply and water removal	Complex designing
Plancenter Ltd.	Technical assistance and supervision during reconstruction of Sestroretsk WWTP.	Construction supervision, follow-through construction support
SUE LenGiproIngProjekt	Approval of design solution of feasibility study for reconstruction of Petrodvorets WWTP.	Amendments of the process part
Intar	Water supply and sewage nets.	Complex designing
SMU no. 305	Connection to the sewage system in Pavlovk city	Complex designing
SUE LenGiproIngProjekt	Pre-design elaborations for WWTP Lomonosov	Amendments of the process part
LenSpecSMU	Temporary water supply and water removal of the construction area	Complex designing
SUE LenGiproIngProjekt	Reconstruction of SVS. Elaboration of the variant based on Degremon technology	Complex designing
Leningradsky Vodokanalproject	Designing of bio filters for air cleaning for WWTP Repino	Complex designing
SUE LenGiproIngProjekt	Phosphorous removal with Kemira reagents	Complex designing in association with Plancenter Ltd.
SUE Vodokanal of Saint-Petersburg	Filtering of underground waters in Sestroretsk. Implementation of technology of ferric and manganese removal.	Complex designing in association with Plancenter Ltd.
Vodokanalstroy CJSC (Saint-Petersburg)	Engineering investigation and designing of reconstruction	Complex designing
SUE Vodokanal of Saint-Petersburg	Feasibility study and detailed design regarding the system of water consumption control	Complex designing
Plancenter Ltd.	Consulting concerned the Vologda WWTP	Complex designing
Vodokanalstroy CJSC (Saint-Petersburg)	Engineering investigation. Central Station of Aeration	Engineering investigation
Saturn, NPO	Sewage system of Saturn NPO	Calculation and designing of prefabricated pumping station with FLYGT equipment Delivery of equipment to the object, manufacturing of the pumping station in accordance with approved drawings, supervision.
SUE LenGiproIngProjekt	SUE Vodokanal of Saint Petersburg	Calculation of mixing system with equipment of FLYGT (vertical mixers) for Central Station of Aeration WWTP. Delivery of equipment in acc. with elaborated documentation, supervision
SUE LenGiproIngProjekt	SUE Vodokanal of Saint Petersburg	Calculation of mixing system with Flygt equipment for Kroonstad, Lomonosov, Kolpino, Metallostroy, Molodeznye WWTPs.
KirovGrazhdanProject	SUE Vodokanal Saransk	Designing of sludge removal system (preliminary and secondary basins) with equipment of ConPura



Aqua-Delta	Leningrad nuclear power plant	Calculation and designing of the prefabricated pumping station with Flygt equipment.
Vodokanalstroy CJSC (Saint-Petersburg)	Calculation of emptying the main sewage collector at construction works	Calculation with equipment of FLYGT, delivery of equipment in acc. with elaborated documentation, supervision
SUE Vodokanal of Saint-Petersburg	WWTP Osinovaya Rosha	Calculation of system with FLYGT and CONPURA equipment
KWI International	WWTP Astana	Calculation of mixing system with Flygt equipment
Meridian	Pumping station Aleksandrovszkaya	Calculation with equipment of FLYGT, delivery of equipment in acc. with elaborated documentation, supervision
Leningradsky Vodokanalproject – SWECO rus	Reconstruction of the Main Pumping Station in Novgorod	Calculation with equipment of FLYGT, water hummer and joint pump work calculation.
Ecovod Ltd.	Object of Ecovod	Calculation with equipment of FLYGT, Mixing in aeration tanks, mixer selection, aeration system calculations
SUE LenGiproIngProjekt	WWTP Bzugu/Sochi	Calculation of air supply with equipment of SIEMENS HV-TURBO,
Gradex	City hospital of Kogalym	Elaboration of documentation based on results of dimensioning hospital in Kogalym city
Vodoproject	Pumping station Kirov city	Calculation with equipment of FLYGT, water hummer and joint pump work calculation.
LenGiproIngProjekt	WWTP Bzugu/Sochi	Aeration system calculations
Vodokanal Engineering JCSC	WWTP Luga	Calculation with equipment of FLYGT, Mixing in aeration tanks, mixer selection, aeration system calculations
Vodokanal Engineering JCSC	Dolgoprudny pumping station	Calculations with equipment of FLYGT and FM Grinders
Vodokanal Engineering JCSC	Riotek equipment replacement	Equipment of optimization inlet reservoirs of pumping stations
Vodokanal Engineering JCSC	Local WWTPs of Nuclear power plant in Sosnovy Bor	Mixing in aeration tanks, mixer selection, aeration system calculations
Kataliz	WWTP in Irkutsk area	Mixing in aeration tanks, mixer selection, aeration system calculations
LenGiproIngProjekt	WWTP Molodezny	Station with Franklin Miller choppers
LenGiproIngProjekt	WWTP Molodezny	Mixing in aeration tanks, mixer selection, aeration system calculation
LenGiproIngProjekt	WWTP Lomonosov	Mixing in aeration tanks, mixer selection, aeration system calculations
KirovGrazhdanProject	Axial pumps	Calculation with equipment of FLYGT
Promnasosengineering	Pumping station	Equipment of optimization inlet reservoirs of pumping stations
Ecovod Ltd.	Central Station of Aeration of Vodokanal Saint-Petersburg	Mixing in aeration tanks, mixer selection, aeration system calculations
PIIVO	WWTP	Mixing in aeration tanks, mixer selection, aeration system calculations



Leningradsky Vodokanalproject	WWTP Ivanovo, reconstruction	Designing of mech.treatment systems, sludge removal and primary and secondary treatment basins with Conpura equipment. Siemens/HV-turbo blowers. Mixing in aeration basins, selection of mixers, and calculation of aeration systems. Calculation of process pumping with Flygt equipment.
SMU303	WWTP Osinovaua roscha	Designing of mech.treatment systems based of Conpura equipment. Calculation of process pumping with Flygt equipment. Delivery of equipment. Installation supervision.
Element Lcc.	WWTP Osinovaja roscha	Calculation of process pumping with Flygt and Franklin Miller equipment. Delivery of equipment. Installation supervision.
Russian president administration government	WWTP Odintsovo	Delivery of equipment to the object in acc.with the issued documentation
Hydromashservice, Moscow	WWTP Blagoveschensk	Delivery of equipment to the object in acc.with the issued documentation
Vodoproject-Hyrokommunvodok.	WWTP Perm	Designing of mech.treatment systems based of Conpura equipment. Calculation of sand removal with Flygt equipment.
VanBass Co	Piterland, aquapark	Concept of serfing equipment with Flygt equipment.
ColaNordStroy	Nets of the Murmansk district	Calculation and designing of pumping stations with Flygt equipment.
Safkan Plc.	Russkaya kozha Lcc, WWTP	Delivery of equipment to the object in acc.with the issued documentation
Reconstruction of aeration basins at Island Bely	Vodokanal of Saint-Petersburg	Advising regarding reconstruction of the aeration basin and implementation of the Flygt equipment. Delivery of vertical mixers. Installation supervision.
Meridian	WWTP Zheleznodorozny	Calculation and selection of the mixing system.
Lenhyproengproject	Sewage nets of Metallostroy	Calculation and selection of the pumping system.
Olympstroy	Reconstruction of Mzymta Pumping Station	Calculation and selection of the pumping system.
Altaygrazhdanproject	Storm sewage system reconstruction at the city of Barnaul	Calculation and selection of the pumping system.
Mining-and-chemical engineering	Eastern mining of Apatit Plc.	Calculation and selection of the pumping system.
PRISS	Main sewage collector at Krasnodar	Calculation and selection of the pumping system.
Vodokanal of Ivanovo	WWTP Ivanovo. Reconstruction	Calculation and selection of the pumping system and mechanical treatment.
Depot Avtovo	WWTP	Calculation and selection of the pumping system and mechanical treatment.
Vodokanal of Lensk	WWTP	Calculation and selection of the pumping system and mechanical treatment.
DEKO	Pumping station Kotovo at Dolgoprudny city	Calculation and selection of the pumping system and mechanical treatment.



Vodokanal of Murino	WWTP Murino	Calculation and selection of the pumping system and mechanical treatment.
Administration of the Moscow region	Pumping Station Novo-Krukovskaya	Calculation, designing and selection of the pumping system and mechanical treatment.
SMU-303	Pumping station of the Orenburg water intake	Calculation, designing and selection of the pumping system and mechanical treatment.
Vodokanalstroy	Pumping station no. 6 in Saint-Petersburg	Calculation, designing and selection of the pumping system and mechanical treatment.
SSM	Voldo-Donsky Channel	Calculation, designing and selection of the pumping system and mechanical treatment.
Vodokanalstroy	Pumping station Rybinskaya	Calculation, designing and selection of the pumping system and mechanical treatment.
	And many other	

Main and auxiliary staff

Main staff

Director	Dmitry Vlasov
Technical director	Karl Tawaststjerna
Development director	Alexandra Tawaststjerna
Office manager	Victoria Yatsuk
Deputy of tech. director in designing matters	Alexey Antonyuk
Deputy of tech. director in pumping equipment	Dmitry Prikazchenkov
Lead engineer of the pump department	Andrey Bykov
Engineer of the pump department	Alexander Spichihin
Engineer of the equipment department	Evgeny Morozov
Logistic manager	Christina Kaitaz
Chief engineer	Igor Morozov
Economist	Tatiana Pavlova
Marketing specialist	Julia Tawaststjerna

Auxiliary staff

Auditor-accountant	Tatiana Zaharchenko
Constructor	Peter Laktionov
Architect	Igor Petrov
Process specialist	Alexander Semchenkov
Communication and alarm systems	Maxim Makarov

© Petroplan Engineering Co.Ltd 2014
 197341, Kolomyagsky pr. 33 lit. A, off. 7-н, Saint-Petersburg, Russia,
 Phone / fax +7 812 633-03-43, +7 812 633-03-44

E-mail: ref@petroplan.ru

www.petroplan.ru www.petroplanpro.spb.ru www.flytekspb.ru

Your tasks - our professional solutions

