



**ITT**

Water & Wastewater

---

# Parts List

**Flygt 2004.212**



*Engineered for life*



# Parts List

Flygt 2004.212

## Overview

---

### Table of Contents

This publication contains the following topics:

### Topic

|                                 |    |
|---------------------------------|----|
| Introduction .....              | 4  |
| Practical information .....     | 5  |
| Data plate interpretation ..... | 6  |
| Product denomination .....      | 7  |
| Order parts .....               | 9  |
| Spare Parts .....               | 10 |
| Exploded view .....             | 11 |
| List of spare parts .....       | 12 |

---

# Introduction

## Purpose

The purpose of this document is to give the reader information about parts and accessories for the product.

---

## Recipient

The document is intended for ITT

- customers
  - service personnel
  - sales personnel
- 

## Contact

For more information

- contact your ITT representative
  - visit <http://www.ittwww.com/>
- 

## Reference

More information about the product is available at <http://webservices.ittwww.com/tpi/>.

---

# Practical information

## Overview

### Table of Contents

---

This chapter contains the following topics:

#### Topic

|                                 |   |
|---------------------------------|---|
| Data plate interpretation ..... | 6 |
| Data plate .....                | 6 |
| Product denomination.....       | 7 |
| Order parts .....               | 9 |

---

# Data plate interpretation

## Introduction

The ITT product is always provided with data plates:

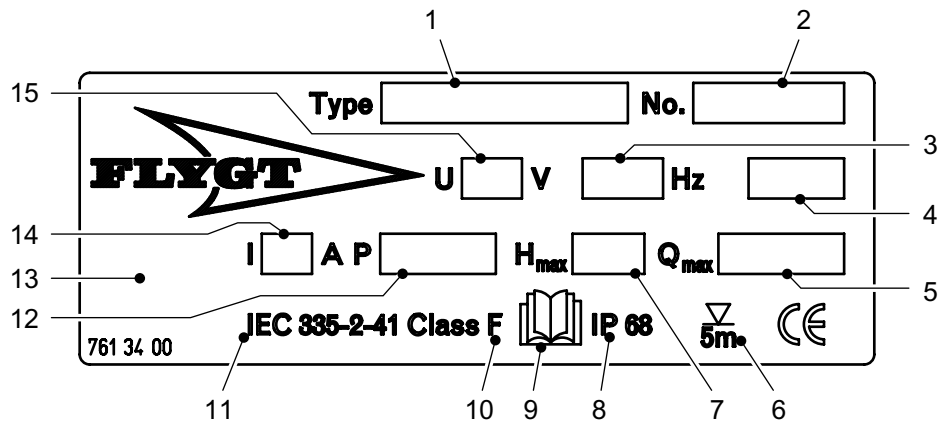
- The general data plate is used on all products.
- The approval plate is added to all explosion proof products.

## Data plate

The product may only be operated within the parameters stated on the data plate.

## Illustration

This is an illustration of a general data plate.



## Field description

This table shows the fields on the general data plate, and which information each field contains.

| Field | Description                       | Field | Description              |
|-------|-----------------------------------|-------|--------------------------|
| 1     | Pump model                        | 9     | Read installation manual |
| 2     | Serial number                     | 10    | Thermal class            |
| 3     | Phase; type of current; frequency | 11    | International standard   |
| 4     | Product weight                    | 12    | Rated shaft power        |
| 5     | Maximum capacity                  | 13    | Country of origin        |
| 6     | Maximum submergence               | 14    | Rated current            |
| 7     | Maximum head                      | 15    | Rated voltage            |
| 8     | Degree of protection              | -     | -                        |

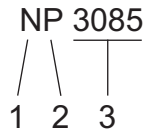
# Product denomination

---

## Sales denomination

The product's identity is built up of the Sales Code (four digit) and two letters indicating hydraulic end and type of installation.

This is an example of a sales denomination.



**Table:** This table explains what the letters and the numbers in the sales code stand for.

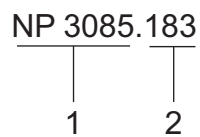
| Code Position | Gives information about the... |
|---------------|--------------------------------|
| 1             | hydraulic part                 |
| 2             | installation mode              |
| 3             | sales code                     |

---

## Product code

In each range the product's identity, Product Code, is made up of seven digits.

This is an example of a product code.



**Table:** This table explains what the product code is made up of:

| Code position | Gives information about the ... |
|---------------|---------------------------------|
| 1             | sales denomination              |
| 2             | version                         |

---

## Serial number

The serial number is used for identification of an individual pump/mixer.

This is an example of a serial number.

NP 3085.183 - 951 0163

1                      2    3    4

**Table:** This table explains what the serial number is made up of:

| Product code position | Gives information about the ... |
|-----------------------|---------------------------------|
| 1                     | product code                    |
| 2                     | production year                 |
| 3                     | production cycle                |
| 4                     | running number                  |

---



## Order parts

---

### **Order**

When ordering spare parts, state serial number of the product, spare part number and quantity.

---

### **Requirements**

Genuine ITT parts must always be used for repairs if the product is to fulfill requirements and obtain official approval.

---

### **Qualification of personnel**

Only ITT or ITT-authorized service personnel may undertake repair work on Ex-approved products.

---

### **Specially approved products**

Spare parts marked with <sup>(EX)</sup> after the part number are subject to dimensional accuracy inspection.

---

# Spare Parts

## Overview

### Table of Contents

---

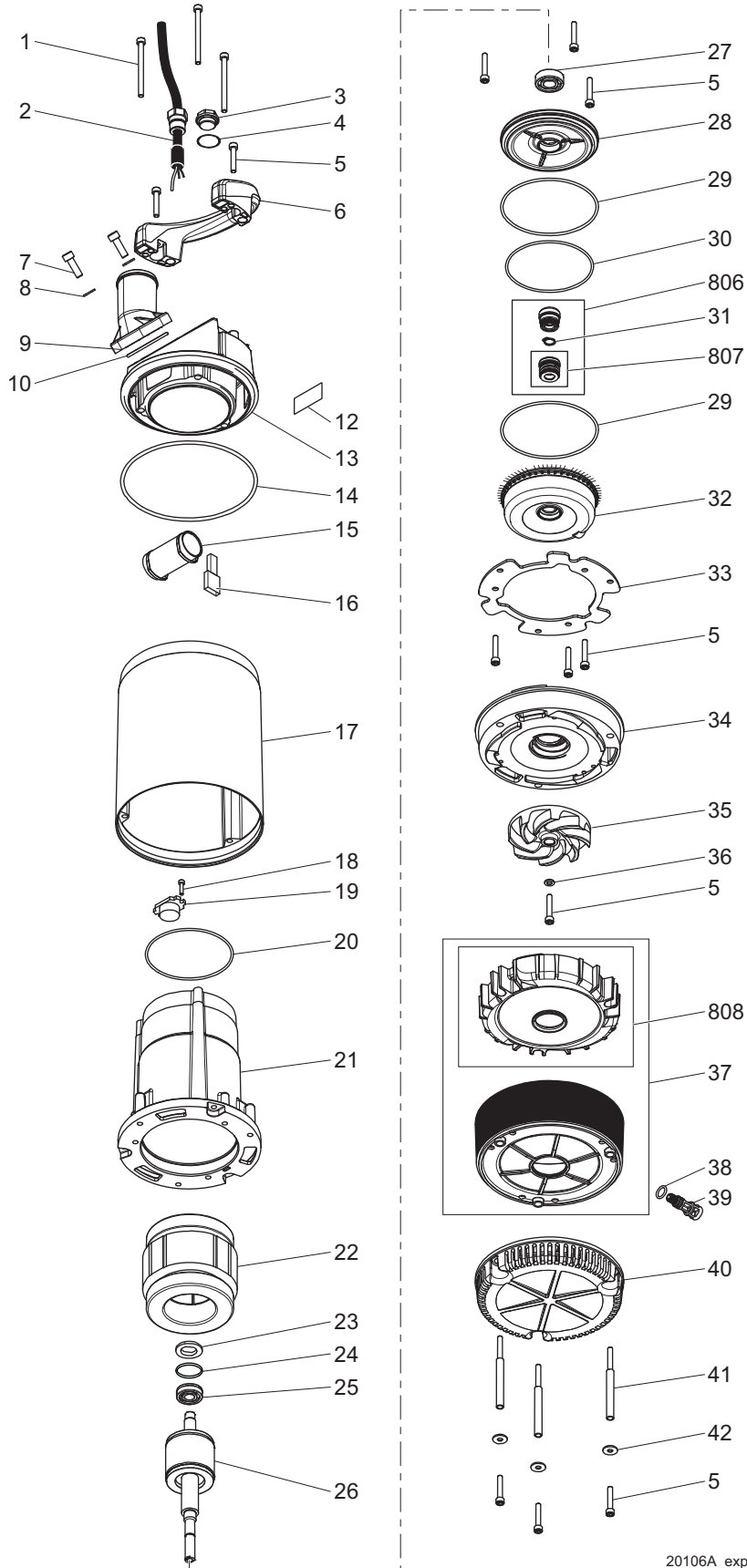
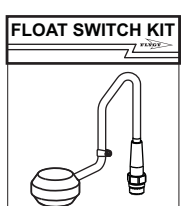
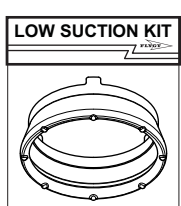
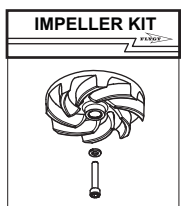
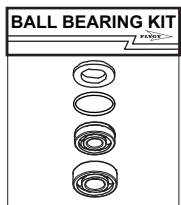
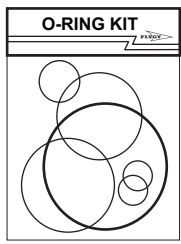
This chapter contains the following topics:

#### Topic

|                           |    |
|---------------------------|----|
| Exploded view .....       | 11 |
| List of spare parts ..... | 12 |

---

# Exploded view



20106A\_expl\_view\_2004.212

## List of spare parts

| Pos. No | Part. No  | Denomination                                     | Qty/Version |
|---------|-----------|--|-------------|
| 1       | 81 65 45  | Hex.socket hd screw<br>M6X80-A2-70               | 3           |
| 2       | 761 03 00 | Motor cable unit<br>532.1U+H07RN-F 3X1 MM2       | 1           |
| 2       | 761 03 01 | Motor cable unit<br>SOOW-16AWG/3 115V USA<br>CDN | 1           |
| 2       | 761 03 02 | Motor cable unit H07RN-F 3X1<br>MM2 230V GB      | 1           |
| 2       | 761 03 03 | Motor cable unit H07RN-F 3X1<br>MM2 230V AUS     | 1           |
| 2       | 761 03 04 | Motor cable unit H07RN-F 3X1<br>MM2 110V GB      | 1           |
| 2       | 761 03 05 | Motor cable unit<br>SOW-16AWG/3 230V USA<br>CDN  | 1           |
| 2       | 761 03 06 | Motor cable unit H07RN-F 3X1<br>MM2 CH           | 1           |
| 3       | 761 05 00 | Plug   | 1           |
| 4       | 82 76 96  | O-ring 20.0X2.0 NBR                              | 1           |
| 5       | 82 00 19  | Hex.socket hd screw<br>M6X35-A2-70               | 12          |
| 6       | 760 58 00 | Handle   | 1           |
| 7       | 82 00 34  | Hex.socket hd screw<br>M8X25-A2-70               | 2           |
| 8       | 82 35 16  | Plain washer 8-A2-A-170                          | 2           |
| 9       | 83 18 24  | Coupling part DN 52 INNER<br>G2B STORZ           | 1           |
| 9       | 708 99 00 | Discharge connection 2"                          | 1           |
| 9       | 708 99 01 | Discharge connection NPSM<br>2"                  | 1           |
| 9       | 708 99 02 | Discharge connection G2"                         | 1           |
| 10      | 82 77 95  | O-ring 52.5X3.0 NBR                              | 1           |
| 12      | 761 34 00 | Data plate                                       | 1           |
| 13      | 760 57 00 | Cover  | 1           |
| 14      | 82 74 83  | O-ring 149.3X5.7 NBR                             | 1           |
| 15      | 84 11 79  | Capacitor 12 MFD 450V                            | 1           |
| 15      | 84 11 80  | Capacitor 14 MFD 450V                            | 1           |
| 15      | 84 11 81  | Capacitor 30 MFD 275V                            | 1           |
| 16      | 83 44 11  | Terminal device 48X12X6<br>MAX.380V 18A          | 1           |
| 16      | 83 44 12  | Terminal device 54X21X8.5<br>MAX.380V 18A        | 1           |

| Pos. No | Part. No  | Denomination                       | Qty/Version  |   |
|---------|-----------|------------------------------------|--------------|---|
|         |           |                                    | 212          |   |
| 17      | 760 56 00 | Cooling jacket                     | 1            |   |
| 18      | 81 99 86  | Hex.socket hd screw<br>M4X16-A2-70 | 1            |   |
| 19      | 84 03 25  | Motor switch 115V 50HZ             | 1            |   |
| 19      | 84 03 26  | Motor switch 230V 50HZ             | 1            |   |
| 19      | 84 03 29  | Motor switch 115V 60HZ             | 1            |   |
| 19      | 84 03 32  | Motor switch 230V 60HZ             | 1            |   |
| 20      | 82 74 73  | O-ring 99.5X3.0 NBR                | 1            |   |
| 21      | 760 55 00 | Stator housing                     | 1            |   |
| 22      | 690 41 01 | Stator 12-05-2b                    | 115V.        | 1 |
| 22      | 690 41 02 | Stator 12-05-2b                    | 230V - 240V. | 1 |
| 23      | 82 56 23  | Spring washer 31.5X25X0.35         | 1            |   |
| 24      | 82 77 19  | O-ring 26.0X1.2 NBR                | 1            |   |
| 25      | 83 51 47  | Ball bearing 12X32X10              | 1            |   |
| 26      | 761 02 00 | Shaft unit                         | 1            |   |
| 27      | 83 32 42  | Ball bearing 15X35X11              | 1            |   |
| 28      | 761 54 00 | Bearing housing                    | 1            |   |
| 29      | 82 74 76  | O-ring 114.5X3.0 NBR               | 2            |   |
| 30      | 82 74 74  | O-ring 104.5X3.0 NBR               | 1            |   |
| 31      | 82 60 84  | Retaining ring                     | 1            |   |
| 32      | 561 48 01 | Oil housing                        | 1            |   |
| 33      | 761 56 00 | Washer                             | 1            |   |
| 34      | 561 54 00 | Wear protection                    | 1            |   |
| 35      | 561 53 10 | Torque flow impeller               | 50 Hz.       | 1 |
| 35      | 561 53 11 | Torque flow impeller               | 60 Hz.       | 1 |
| 36      | 82 37 09  | Plain washer                       | 1            |   |
| 37      | 625 38 00 | Diffuser unit                      | 1            |   |
| 38      | 82 73 82  | O-ring 10.3X2.4 NBR                | 1            |   |
| 39      | 561 50 01 | Inspection screw                   | 1            |   |
| 40      | 661 35 00 | Strainer                           | 1            |   |
| 41      | 760 59 00 | Barrel nut                         | 3            |   |
| 42      | 82 37 93  | Plain washer 9021-6,4X18X1,6       | 3            |   |
| 800     | 769 66 00 | O-ring kit                         | 1            |   |
| 803     | 714 85 00 | Discharge conn. kit 2"             | 1            |   |
| 803     | 714 85 01 | Discharge conn. kit NPSM 2"        | 1            |   |
| 803     | 714 85 02 | Discharge conn. kit G2"            | 1            |   |
| 804     | 618 17 00 | Ball bearing kit                   | 1            |   |
| 804.1   | 82 56 23  | Spring washer 31.5X25X0.35         | 1            |   |
| 804.2   | 82 77 19  | O-ring 26.0X1.2 NBR                | 1            |   |
| 804.3   | 83 32 42  | Ball bearing 15X35X11              | 1            |   |

| Pos. No | Part. No  | Denomination               | Qty/Version |  |
|---------|-----------|----------------------------|-------------|--|
|         |           |                            | 212         |  |
| 804.4   | 83 51 47  | Ball bearing 12X32X10      | 1           |  |
| 805     | 769 67 00 | Impeller kit 50 Hz.        | 1           |  |
| 805     | 769 67 01 | Impeller kit 60 Hz.        | 1           |  |
| 806     | 618 16 00 | Seal kit COMPLETE          | 1           |  |
| 807     | 621 02 00 | Outer seal kit             | 1           |  |
| 808     | 769 68 00 | Diffusor kit               | 1           |  |
| 903     | 633 07 00 | Low suction kit            | 1           |  |
| 910     | 761 32 00 | Level regulator kit EU     | 1           |  |
| 910     | 761 32 01 | Level regulator kit CSA UL | 1           |  |





### What can ITT Water & Wastewater do for you?

Integrated solutions for fluid handling are offered by ITT Water & Wastewater as a world leader in transport and treatment of wastewater. We provide a complete range of water, wastewater and drainage pumps, equipment for monitoring and control, units for primary and secondary biological treatment, products for filtration and disinfection, and related services. ITT Water & Wastewater, headquartered in Sweden, operates in some 140 countries across the world, with own plants in Europe, China and North and South America. The company is wholly owned by the ITT Corporation of White Plains, New York, supplier of advanced technology products and services.



**SANITAIRE®**

**WEDECO**



Visit our Web site for the latest version of this document and more information  
[webservices.ittwww.com/tpi](http://webservices.ittwww.com/tpi)

ITT Water & Wastewater AB  
SE-174 87 Sundbyberg  
Sweden

Visiting address:  
Gesällvägen 33  
Sundbyberg  
Sweden

Tel. +46-8-475 60 00  
Fax +46-8-475 69 00

© ITT Water & Wastewater AB. The original instruction is in English.  
All non-English instructions are translations of the original instruction.  
882672\_1.0\_en.US\_2011-08\_GPL.2004.212