



Ready 4

Table of Contents

| | |
|--------------------------------------|---|
| Introduction | 2 |
| Purpose of this manual..... | 2 |
| Disclaimer..... | 2 |
| Data for ordering spare parts..... | 2 |
| Specially approved products..... | 2 |
| Qualification of personnel..... | 2 |
| Dimensional accuracy inspection..... | 2 |
| Product Description | 3 |
| The data plate..... | 3 |
| Product denomination..... | 3 |
| Spare Parts | 5 |
| Exploded view..... | 5 |
| List of parts..... | 6 |

Introduction

Purpose of this manual

The purpose of this manual is to provide necessary information on spare parts and accessories order.

Disclaimer

Always use genuine Flygt parts. The use of other spare parts or accessories can invalidate any claims for warranty or compensation. Xylem does not take any responsibility for damages caused by the use of non-original parts. For more information, contact your Xylem representative.

Data for ordering spare parts

The following information is needed for spare part orders:

- Serial number of the product
- Part number
- Quantity (* specify piece goods)

Specially approved products

Qualification of personnel

Only Xylem or Xylem-authorized service personnel may undertake repair work on Ex-approved products.

Dimensional accuracy inspection

Spare parts marked with (EX) after the part number are subject to dimensional accuracy inspection.

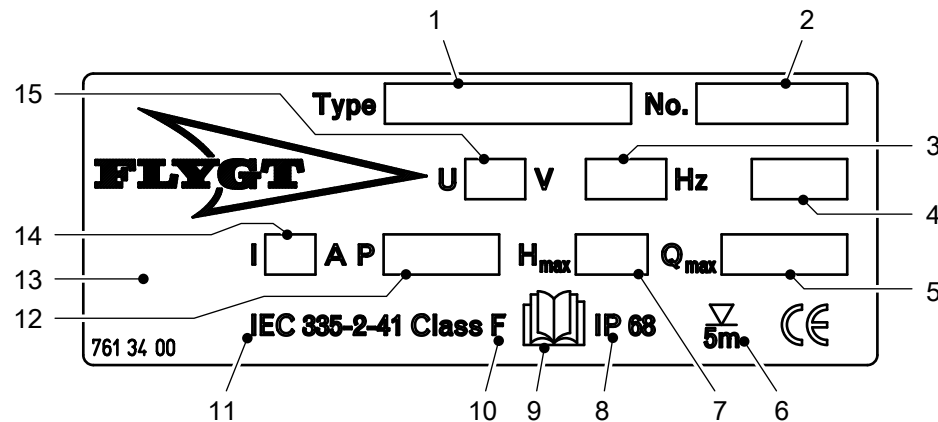
Product Description

The data plate

Introduction

The data plate is located on the main body of the pump. The data plate lists key product specifications.

The data plate



1. Pump model
2. Serial number
3. Phase; type of current; frequency
4. Product weight
5. Maximum capacity
6. Maximum submergence
7. Maximum head
8. Degree of protection
9. Read installation manual
10. Thermal class
11. International standard
12. Rated shaft power
13. Country of origin
14. Rated current
15. Rated voltage

Product denomination

Sales denomination

The sales denomination consists of the four-digit sales code and two letters that indicate the hydraulic end and type of installation.

This is an example of a sales denomination, and an explanation of its parts.

NP 3085



1. Hydraulic part
2. Installation type
3. Sales code

Product code

The product code consists of nine characters divided into two parts.

This is an example of a product code, and an explanation of its parts.

NP 3085.183

1

2

1. Sales denomination
2. Version

Serial number

The serial number is used for identification of an individual product, and is divided into four parts.

This is an example of a serial number, and an explanation of its parts.

NP 3085.183 - 951 0163

1

2

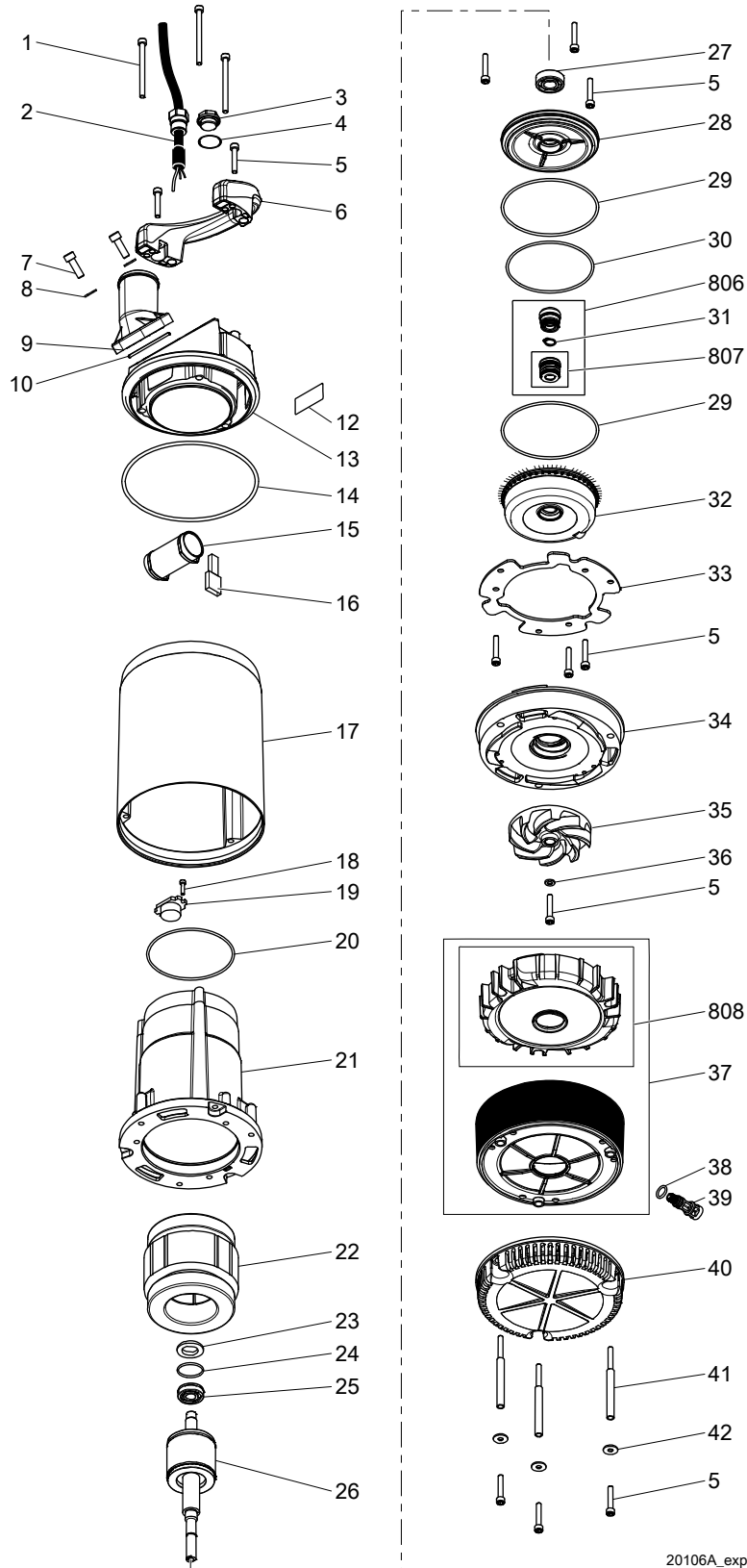
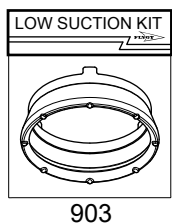
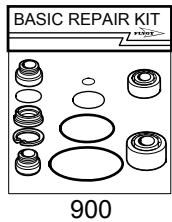
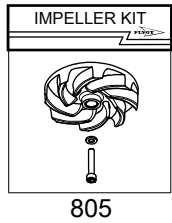
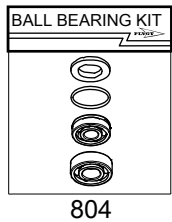
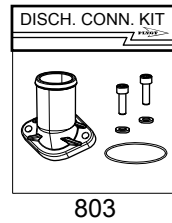
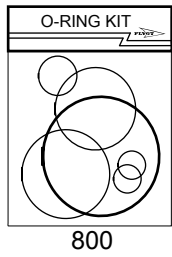
3

4

1. Product code
2. Production year
3. Production cycle
4. Running number

Spare Parts

Exploded view



20106A_expl_view_2004.212

List of parts

| Pos. No | Part. No | Denomination | Qty/Version |
|---------|-----------|---|-------------|
| | | | 212 |
| 1 | 81 65 45 | Hex.socket hd screw M6X80-A2-70 | 3 |
| 2 | 761 03 00 | Motor cable unit 532.1U+H07RN-F 3X1 MM2 | 1 |
| 2 | 761 03 01 | Motor cable unit S00W-16AWG/3 115V USA CDN | 1 |
| 2 | 761 03 02 | Motor cable unit H07RN-F 3X1 MM2 230V GB | 1 |
| 2 | 761 03 03 | Motor cable unit H07RN-F 3X1 MM2 230V AUS | 1 |
| 2 | 761 03 04 | Motor cable unit H07RN-F 3X1 MM2 110V GB | 1 |
| 2 | 761 03 05 | Motor cable unit SOW-16AWG/3 230V USA CDN | 1 |
| 2 | 761 03 06 | Motor cable unit H07RN-F 3X1 MM2 CH | 1 |
| 3 | 761 05 00 | Plug | 1 |
| 4 | 82 76 96 | O-ring 20.0X2.0 NBR | 1 |
| 5 | 82 00 19 | Hex.socket hd screw M6X35-A2-70 | 12 |
| 6 | 760 58 00 | Handle | 1 |
| 7 | 82 00 34 | Hex.socket hd screw M8X25-A2-70 | 2 |
| 8 | 82 35 16 | Plain washer 8-A2-A-170 | 2 |
| 9 | 83 18 24 | Coupling part DN 52 INNER G2B STORZ | 1 |
| 9 | 708 99 00 | Discharge connection 2" | 1 |
| 9 | 708 99 01 | Discharge connection NPSM 2" | 1 |
| 9 | 708 99 02 | Discharge connection G2" | 1 |
| 10 | 82 77 95 | O-ring 52.5X3.0 NBR | 1 |
| 12 | 761 34 00 | Data plate | 1 |
| 13 | 760 57 00 | Cover | 1 |
| 14 | 82 74 83 | O-ring 149.3X5.7 NBR | 1 |
| 15 | 84 11 79 | Capacitor 12 MFD 450V | 1 |
| 15 | 84 11 80 | Capacitor 14 MFD 450V | 1 |
| 15 | 84 11 81 | Capacitor 30 MFD 275V | 1 |
| 16 | 83 44 11 | Terminal device 48X12X6 MAX.380V 18A | 1 |
| 16 | 83 44 12 | Terminal device 54X21X8.5 MAX.380V 18A | 1 |
| 17 | 760 56 00 | Cooling jacket | 1 |
| 18 | 81 99 86 | Hex.socket hd screw M4X16-A2-70 | 1 |
| 19 | 84 03 25 | Motor switch 115V 50HZ | 1 |

| Pos. No | Part. No | Denomination | Qty/Version |
|---------|-----------|------------------------------|---|
| | | | 212 |
| 19 | 84 03 26 | Motor switch 230V 50HZ | 1 |
| 19 | 84 03 29 | Motor switch 115V 60HZ | 1 |
| 19 | 84 03 32 | Motor switch 230V 60HZ | 1 |
| 20 | 82 74 73 | O-ring 99.5X3.0 NBR | 1 |
| 21 | 760 55 00 | Stator housing | 1 |
| 22 | 690 41 01 | Stator 12-05-2b | 115V. |
| 22 | 690 41 02 | Stator 12-05-2b | 230V - 240V. |
| 23 | 82 56 23 | Spring washer 31.5X25X0.35 | 1 |
| 24 | 82 77 19 | O-ring 26.0X1.2 NBR | 1 |
| 25 | 83 51 47 | Ball bearing 12X32X10 | 1 |
| 26 | 761 02 00 | Shaft unit | 1 |
| 27 | 83 32 42 | Ball bearing 15X35X11 | 1 |
| 28 | 761 54 00 | Bearing housing | 1 |
| 29 | 82 74 76 | O-ring 114.5X3.0 NBR | 2 |
| 30 | 82 74 74 | O-ring 104.5X3.0 NBR | 1 |
| 31 | 82 60 84 | Retaining ring | 1 |
| 32 | 561 48 01 | Oil housing | 1 |
| 33 | 761 56 00 | Washer | 1 |
| 34 | 561 54 00 | Wear protection | 1 |
| 35 | 561 53 10 | Torque flow impeller | 50 Hz. |
| 35 | 561 53 11 | Torque flow impeller | 60 Hz. |
| 36 | 82 37 09 | Plain washer | 1 |
| 37 | 625 38 00 | Diffuser unit | 1 |
| 38 | 82 73 82 | O-ring 10.3X2.4 NBR | 1 |
| 39 | 770 12 00 | Inspection screw | 1 |
| 40 | 661 35 00 | Strainer | 1 |
| 41 | 760 59 00 | Barrel nut | 3 |
| 42 | 82 37 93 | Plain washer 9021-6,4X18X1,6 | 3 |
| 800 | 769 66 00 | O-ring kit | Contains all position numbered O-rings. |
| 803 | 714 85 00 | Discharge conn. kit 2" | 1 |
| 803 | 714 85 01 | Discharge conn. kit NPSM 2" | 1 |
| 803 | 714 85 02 | Discharge conn. kit G2" | 1 |
| 804 | 618 17 00 | Ball bearing kit | 1 |
| 804.1 | 82 56 23 | Spring washer 31.5X25X0.35 | 1 |
| 804.2 | 82 77 19 | O-ring 26.0X1.2 NBR | 1 |
| 804.3 | 83 32 42 | Ball bearing 15X35X11 | 1 |
| 804.4 | 83 51 47 | Ball bearing 12X32X10 | 1 |
| 805 | 769 67 00 | Impeller kit | 50 Hz. |

Spare Parts

| Pos. No | Part. No | Denomination | | Qty/Version |
|---------|-----------|----------------------------|--------|-------------|
| | | | | 212 |
| 805 | 769 67 01 | Impeller kit | 60 Hz. | 1 |
| 806 | 618 16 00 | Seal kit COMPLETE | | 1 |
| 807 | 621 02 00 | Outer seal kit | | 1 |
| 808 | 769 68 00 | Diffusor kit | | 1 |
| 903 | 633 07 00 | low suction kit | | 1 |
| 910 | 761 32 00 | Level regulator kit EU | | 1 |
| 910 | 761 32 01 | Level regulator kit CSA UL | | 1 |

Xylem |'zīləm|

- 1) The tissue in plants that brings water upward from the roots
- 2) A leading global water technology company

We're 12,500 people unified in a common purpose: creating innovative solutions to meet our world's water needs. Developing new technologies that will improve the way water is used, conserved, and re-used in the future is central to our work. We move, treat, analyze, and return water to the environment, and we help people use water efficiently, in their homes, buildings, factories and farms. In more than 150 countries, we have strong, long-standing relationships with customers who know us for our powerful combination of leading product brands and applications expertise, backed by a legacy of innovation.

For more information on how Xylem can help you, go to xylem.com



Xylem Water Solutions AB
Gesällvägen 33
174 87 Sundbyberg
Sweden
Tel. +46-8-475 60 00
Fax +46-8-475 69 00
<http://tpi.xylem.com>

Visit our Web site for the latest version of this document and more information

The original instruction is in English. All non-English instructions are translations of the original instruction.

© 2011 Xylem Inc