



ITT

Water & Wastewater

Parts List

Flygt 2008.281



Engineered for life

Parts List

Flygt 2008.281

Overview

Table of Contents

This publication contains the following topics:

Topic

Introduction	4
Practical information	5
Data plate interpretation	6
Product denomination	7
Order parts	9
Spare Parts	10
Exploded view	11
List of spare parts	12

Introduction

Purpose

The purpose of this document is to give the reader information about parts and accessories for the product.

Recipient

The document is intended for ITT

- customers
 - service personnel
 - sales personnel
-

Contact

For more information

- contact your ITT representative
 - visit <http://www.ittwww.com/>
-

Reference

More information about the product is available at <http://webservices.ittwww.com/tpi/>.

Practical information

Overview

Table of Contents

This chapter contains the following topics:

Topic

Data plate interpretation	6
Data plate	6
Product denomination.....	7
Order parts	9

Data plate interpretation

Introduction

The ITT product is always provided with data plates:

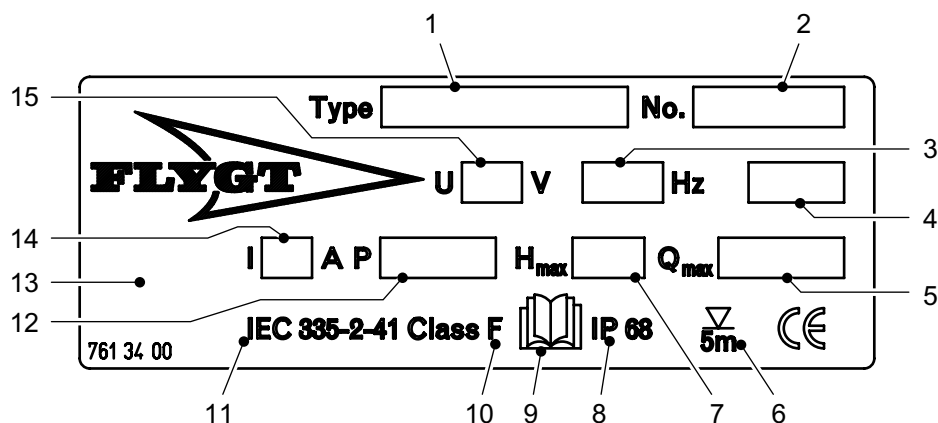
- The general data plate is used on all products.
- The approval plate is added to all explosion proof products.

Data plate

The product may only be operated within the parameters stated on the data plate.

Illustration

This is an illustration of a general data plate.



Field description

This table shows the fields on the general data plate, and which information each field contains.

Field	Description	Field	Description
1	Pump model	9	Read installation manual
2	Serial number	10	Thermal class
3	Phase; type of current; frequency	11	International standard
4	Product weight	12	Rated shaft power
5	Maximum capacity	13	Country of origin
6	Maximum submergence	14	Rated current
7	Maximum head	15	Rated voltage
8	Degree of protection	-	-

Product denomination

Sales denomination

The product's identity is built up of the Sales Code (four digit) and two letters indicating hydraulic end and type of installation.

This is an example of a sales denomination.

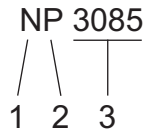


Table: This table explains what the letters and the numbers in the sales code stand for.

Code Position	Gives information about the...
1	hydraulic part
2	installation mode
3	sales code

Product code

In each range the product's identity, Product Code, is made up of seven digits.

This is an example of a product code.

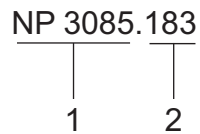


Table: This table explains what the product code is made up of:

Code position	Gives information about the ...
1	sales denomination
2	version

Serial number

The serial number is used for identification of an individual pump/mixer.

This is an example of a serial number.

NP 3085.183 - 951 0163

1 2 3 4

Table: This table explains what the serial number is made up of:

Product code position	Gives information about the ...
1	product code
2	production year
3	production cycle
4	running number

Order parts

Order

When ordering spare parts, state serial number of the product, spare part number and quantity.

Requirements

Genuine ITT parts must always be used for repairs if the product is to fulfill requirements and obtain official approval.

Qualification of personnel

Only ITT or ITT-authorized service personnel may undertake repair work on Ex-approved products.

Specially approved products

Spare parts marked with ^(EX) after the part number are subject to dimensional accuracy inspection.

Spare Parts

Overview

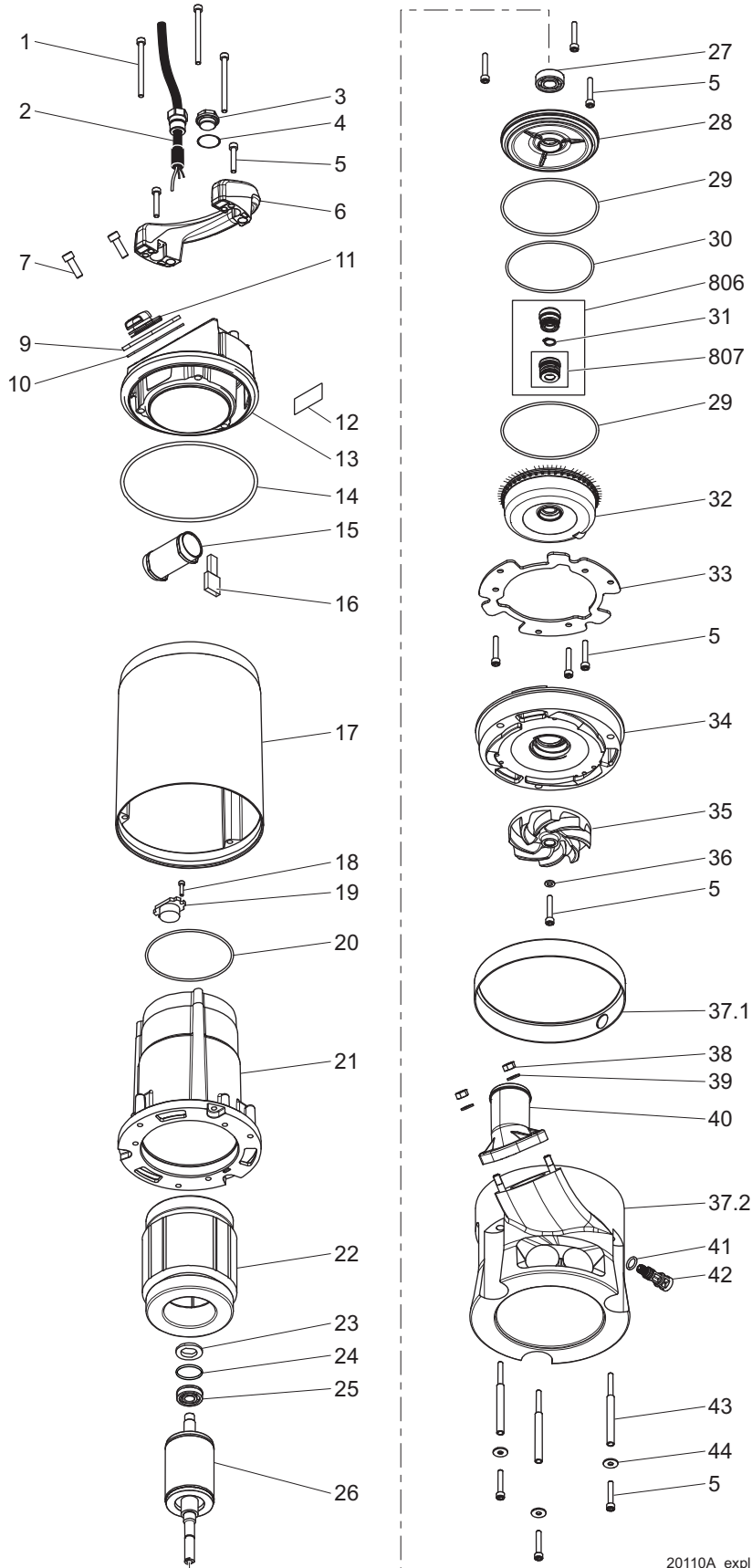
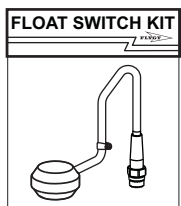
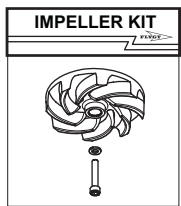
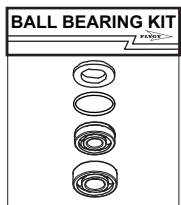
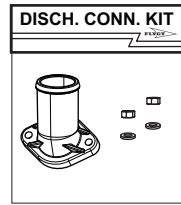
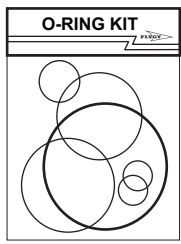
Table of Contents

This chapter contains the following topics:

Topic

Exploded view	11
List of spare parts	12

Exploded view



20110A_expl_view_2008.281

List of spare parts

Pos. No	Part. No	Denomination	Qty/Version
1	81 65 45	Hex.socket hd screw M6X80-A2-70	3
2	761 03 00	Motor cable unit 532.1U+H07RN-F 3X1 MM2	1
2	761 03 01	Motor cable unit SOOW-16AWG/3 115V USA CDN	1
2	761 03 02	Motor cable unit H07RN-F 3X1 MM2 230V GB	1
2	761 03 03	Motor cable unit H07RN-F 3X1 MM2 230V AUS	1
2	761 03 04	Motor cable unit H07RN-F 3X1 MM2 110V GB	1
2	761 03 05	Motor cable unit SOW-16AWG/3 230V USA CDN	1
2	761 03 06	Motor cable unit H07RN-F 3X1 MM2 CH	1
3	761 05 00	Plug	1
4	82 76 96	O-ring 20.0X2.0 NBR	1
5	82 00 19	Hex.socket hd screw M6X35-A2-70	12
6	760 58 00	Handle	1
7	83 02 97	Hex.socket hd screw M8X16-A4-70	2
9	83 18 24	Coupling part DN 52 INNER G2B STORZ	1
10	713 08 00	Gasket	1
11	767 20 00	Valve unit	1
12	761 34 00	Data plate	1
13	760 57 00	Cover	1
14	82 74 83	O-ring 149.3X5.7 NBR	1
15	84 11 80	Capacitor 14 MFD 450V	1
15	84 11 81	Capacitor 30 MFD 275V	1
15	84 11 82	Capacitor 35 MFD 275V	1
16	83 44 11	Terminal device 48X12X6 MAX.380V 18A	1
16	83 44 12	Terminal device 54X21X8.5 MAX.380V 18A	1
17	760 56 00	Cooling jacket	1
18	81 99 86	Hex.socket hd screw M4X16-A2-70	1
19	84 03 27	Motor switch 115V 50HZ	1

Pos. No	Part. No	Denomination	Qty/Version	
			281	
19	84 03 28	Motor switch 230V 50HZ	1	
19	84 03 30	Motor switch 115V 60HZ	1	
19	84 03 33	Motor switch 230V 60HZ	1	
20	82 74 73	O-ring 99.5X3.0 NBR	1	
21	760 55 00	Stator housing	1	
22	690 42 01	Stator 12-08-2b	1	115V.
22	690 42 02	Stator 12-08-2b	1	230V - 240V.
23	82 56 23	Spring washer 31.5X25X0.35	1	
24	82 77 19	O-ring 26.0X1.2 NBR	1	
25	83 51 47	Ball bearing 12X32X10	1	
26	761 02 01	Shaft unit	1	
27	83 32 42	Ball bearing 15X35X11	1	
28	761 54 00	Bearing housing	1	
29	82 74 76	O-ring 114.5X3.0 NBR	2	
30	82 74 74	O-ring 104.5X3.0 NBR	1	
31	82 60 84	Retaining ring	1	
32	561 48 01	Oil housing	1	
33	761 56 00	Washer	1	
34	561 54 00	Wear protection	1	
35	712 84 00	Impeller	1	50 Hz.
35	712 84 02	Impeller	1	60 Hz.
36	82 37 09	Plain washer	1	
37	701 31 00	Pump housing unit	1	
37.1	702 69 00	Supporting ring	1	
37.2	702 68 00	Pump housing	1	
38	82 23 32	Hexagon nut M8-A4-70	2	
39	82 35 16	Plain washer 8-A2-A-170	2	
40	708 99 00	Discharge connection 2"	1	
40	708 99 01	Discharge connection NPSM 2"	1	
40	708 99 02	Discharge connection G2"	1	
41	82 73 82	O-ring 10.3X2.4 NBR	1	
42	561 50 01	Inspection screw	1	
43	760 59 00	Barrel nut	3	
44	82 37 93	Plain washer 9021-6,4X18X1,6	3	
800	769 66 00	O-ring kit	1	
803	714 85 00	Discharge conn. kit 2"	1	
803	714 85 01	Discharge conn. kit NPSM 2"	1	
803	714 85 02	Discharge conn. kit G2"	1	
804	618 17 00	Ball bearing kit	1	

Pos. No	Part. No	Denomination	Qty/Version	
			281	
804.1	82 56 23	Spring washer 31.5X25X0.35	1	
804.2	82 77 19	O-ring 26.0X1.2 NBR	1	
804.3	83 32 42	Ball bearing 15X35X11	1	
804.4	83 51 47	Ball bearing 12X32X10	1	
805	769 69 00	Impeller kit 50 Hz.	1	
805	769 69 01	Impeller kit 60 Hz.	1	
806	618 16 00	Seal kit COMPLETE	1	
807	621 02 00	Outer seal kit	1	
910	761 32 00	Level regulator kit EU	1	
910	761 32 01	Level regulator kit CSA UL	1	



What can ITT Water & Wastewater do for you?

Integrated solutions for fluid handling are offered by ITT Water & Wastewater as a world leader in transport and treatment of wastewater. We provide a complete range of water, wastewater and drainage pumps, equipment for monitoring and control, units for primary and secondary biological treatment, products for filtration and disinfection, and related services. ITT Water & Wastewater, headquartered in Sweden, operates in some 140 countries across the world, with own plants in Europe, China and North and South America. The company is wholly owned by the ITT Corporation of White Plains, New York, supplier of advanced technology products and services.



SANITAIRE®

WEDECO



Visit our Web site for the latest version of this document and more information
webservices.ittwww.com/tpi

ITT Water & Wastewater AB
SE-174 87 Sundbyberg
Sweden

Visiting address:
Gesällvägen 33
Sundbyberg
Sweden

Tel. +46-8-475 60 00
Fax +46-8-475 69 00

© ITT Water & Wastewater AB. The original instruction is in English.
All non-English instructions are translations of the original instruction.
882674_1.0_en.US_2011-08_GPL.2008.281