



# PERFORMANCE FIELD

at Constant nominal speed

PROD.  
**PL 7040.180**

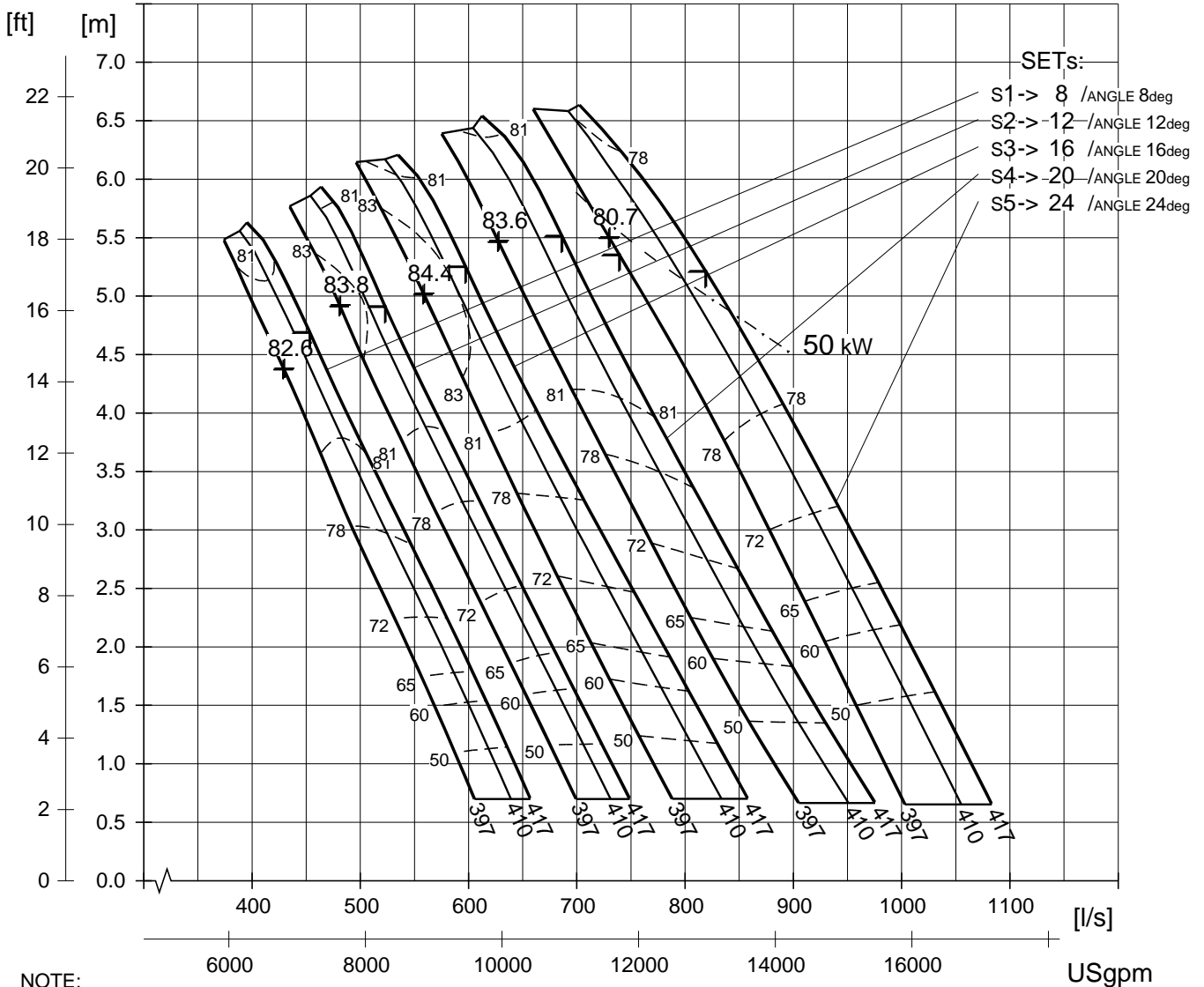
CURVE NO  
**53- 6XX-00 -.. vv**

DATE <b>2013-01-09</b>	ISSUE <b>1</b>	FREQ. <b>50 HZ</b>	NOMINAL HYDRAULIC-END SPEED <b>995 RPM</b>	
IMPELLER/HUB DIAMETER - / - mm	TYPE OF BLADES <b>N</b>	BLADE ANGLE <b>8 , 12 , 16 , 20 , 24 deg</b>	NO. OF BLADES <b>3</b>	
DRIVE UNIT /SETS - /1/2/3/4/5	MOTOR <b>35-25-6AA</b>	POLES <b>6</b>	RATED POWER <b>50 kW</b>	RATED SPEED <b>980 RPM</b>
- /4(20)/5(24)	<b>35-29-6AA</b>	<b>6</b>	<b>63</b>	<b>995</b>

IMPELLER (Pxx)	(vv)	DIAMETER
614	12	397 mm
612	11	410 mm
610	10	417 mm
624	12	397 mm
622	11	410 mm
620	10	417 mm
634	12	397 mm
632	11	410 mm
630	10	417 mm
644	12	397 mm
642	11	410 mm
640	10	417 mm
654	12	397 mm
652	11	410 mm
650	10	417 mm

## HEAD

ISO-CURVES :  
(---) PUMP EFFICIENCY [%] and (-.-.-) POWER LIMITS



NOTE:

CURVES ARE BASED ON NOMINAL CONSTANT HYDRAULIC-END SPEED.  
and SHOW PERFORMANCE WITH CLEAR COLD WATER.  
ALL HYDRAULIC LOSSES UP TO 500 mm ABOVE THE TOP OF THE PUMP/MOTOR ARE INCLUDED.  
(NPSHR) = (NPSH3) + margins

## FLOW

