



Ready 4, 4L

Table of Contents

| | |
|--------------------------------------|----------|
| 1 Introduction..... | 2 |
| 1.1 Specially approved products..... | 2 |
| 2 Product Description..... | 3 |
| 2.1 Products included..... | 3 |
| 2.2 The data plate..... | 3 |
| 2.3 Product denomination..... | 3 |
| 3 Spare Parts..... | 5 |
| 3.1 Exploded view..... | 5 |
| 3.2 List of parts..... | 6 |

1 Introduction

Purpose of this manual

The purpose of this manual is to provide necessary information on spare parts and accessories order.

Disclaimer

Always use genuine Flygt parts. The use of other spare parts or accessories can invalidate any claims for warranty or compensation. Xylem does not take any responsibility for damages that are caused by the use of non-original parts. For more information, contact your local sales and service representative.

Data for ordering spare parts

The following information is needed for spare part orders:

- Serial number of the product
- Part number
- Quantity of bulk material, see * in tables

1.1 Specially approved products

Qualification of personnel

Only Xylem or Xylem-authorized service personnel may undertake repair work on Ex-approved products.

Dimensional accuracy inspection

Spare parts marked with (Ex) after the part number are subject to dimensional accuracy inspection.

2 Product Description

2.1 Products included

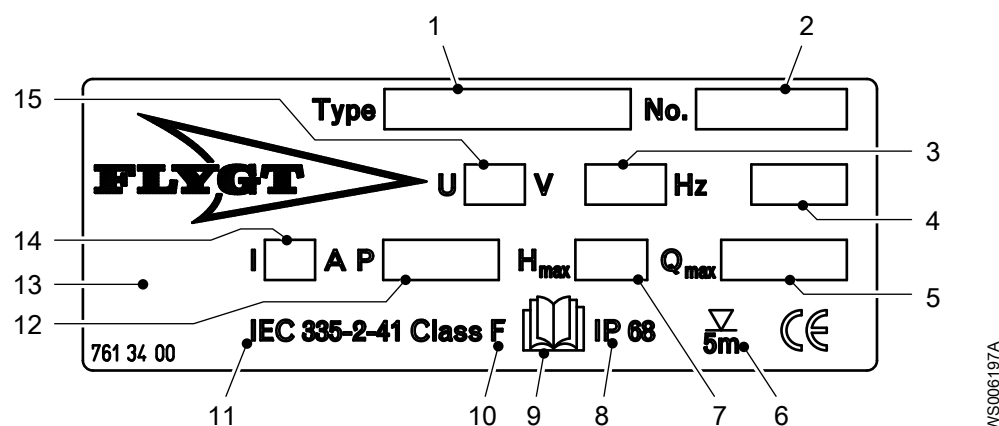
| Pump model | Standard | EX | MSHA | Drainage | Sludge |
|--------------------|----------|----|------|----------|--------|
| Ready 4, 2004.212 | X | | | X | |
| Ready 4L, 2004.230 | X | | | X | |

2.2 The data plate

Introduction

The data plate is located on the main body of the pump. The data plate lists key product specifications.

The data plate



1. Pump model
2. Serial number
3. Phase; type of current; frequency
4. Product weight
5. Maximum capacity
6. Maximum submergence
7. Maximum head
8. Degree of protection
9. Read installation manual
10. Thermal class
11. International standard
12. Maximum power consumption
13. Country of origin
14. Rated current
15. Rated voltage

2.3 Product denomination

Reading instruction

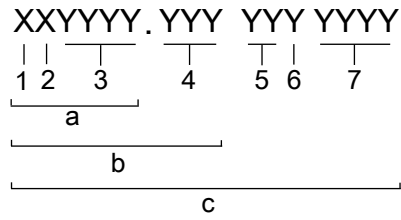
In this section, code characters are illustrated accordingly:

X = letter

Y = digit

The different types of codes are marked up with a, b and c. Code parameters are marked up with numbers.

Codes and parameters

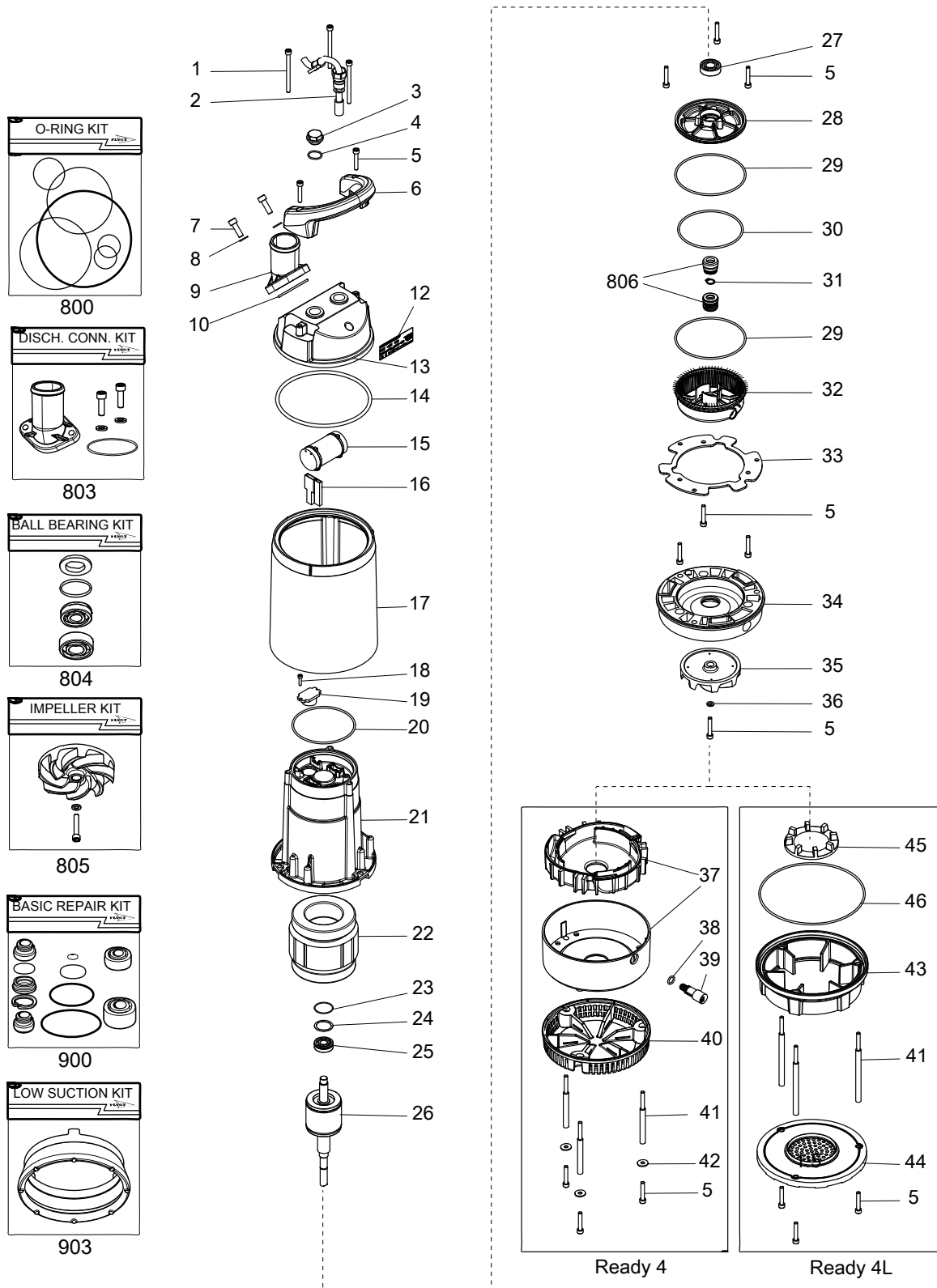


WS006265B

| Type of Callout | Number | Indication |
|-----------------|--------|----------------------|
| Type of code | a | Sales denomination |
| | b | Product code |
| | c | Serial number |
| Parameter | 1 | Hydraulic end |
| | 2 | Type of installation |
| | 3 | Sales code |
| | 4 | Version |
| | 5 | Production year |
| | 6 | Production cycle |
| | 7 | Running number |

3 Spare Parts

3.1 Exploded view



20106C_expl_view_2004.212_2004.230

3.2 List of parts

| Pos. No | Part. No | Denomination | Qty/Version | |
|---------|-----------|--|-------------|-----|
| | | | 212 | 230 |
| 1 | 81 65 45 | Hex.socket hd screw M6X80-A2-70 | 3 | 3 |
| 2 | 761 03 00 | Motor cable unit 532.1U+H07RN-F 3X1 MM2 | 1 | 1 |
| 2 | 761 03 07 | Motor cable unit H07RN-F 3x1 | 1 | 1 |
| 2 | 761 03 01 | Motor cable unit SOOW-16AWG/3 115V USA CDN | 1 | 1 |
| 2 | 761 03 05 | Motor cable unit SOW-16AWG/3 230V USA CDN | 1 | 1 |
| 2 | 761 03 04 | Motor cable unit H07RN-F 3X1 MM2 110V GB | 1 | 1 |
| 2 | 761 03 02 | Motor cable unit H07RN-F 3X1 MM2 230V GB | 1 | 1 |
| 2 | 761 03 03 | Motor cable unit H07RN-F 3X1 MM2 230V AUS | 1 | 1 |
| 3 | 761 05 00 | Plug | 1 | 1 |
| 4 | 82 76 96 | O-ring 20.0X2.0 NBR | 1 | 1 |
| 5 | 82 00 19 | Hex.socket hd screw M6X35-A2-70 | 12 | 12 |
| 6 | 760 58 00 | Handle | 1 | 1 |
| 7 | 82 00 34 | Hex.socket hd screw M8X25-A2-70 | 2 | 2 |
| 8 | 82 35 16 | Plain washer 8-A2-170 | 2 | 2 |
| 9 | 708 99 00 | Discharge connection 2" | 1 | 1 |
| | | | | |
| 9 | 708 99 02 | Discharge connection G2" | 1 | 1 |
| | | | | |
| 9 | 708 99 01 | Discharge connection NPSM 2" | 1 | 1 |
| 9 | 83 18 24 | Coupling part | 1 | 1 |
| | | | | |
| 10 | 82 77 95 | O-ring 52.5X3.0 NBR | 1 | 1 |
| 12 | 761 34 00 | Data plate | 1 | 1 |
| 13 | 760 57 00 | Cover | 1 | 1 |
| 14 | 82 74 83 | O-ring 149.3X5.7 NBR | 1 | 1 |
| 15 | 84 11 81 | Capacitor 30 MFD 275V | 1 | 1 |
| | | | | |
| | | | | |
| 15 | 84 11 80 | Capacitor 14 MFD 450V | 1 | 1 |
| 15 | 84 11 79 | Capacitor 12 MFD 450V | 1 | 1 |
| | | | | |
| 16 | 83 44 11 | Terminal device 48X12X6 MAX.380V 18A | 1 | 1 |

| Pos. No | Part. No | Denomination | Qty/Version | |
|---------|-----------|---|-------------|-----|
| | | | 212 | 230 |
| 16 | 83 44 12 | Terminal device 54X21X8.5 MAX.380V 18A | 1 | 1 |
| 17 | 760 56 00 | Cooling jacket | 1 | 1 |
| 18 | 81 99 86 | Hex.socket hd screw M4X16-A2-70 | 1 | 1 |
| 19 | 84 03 25 | Motor switch 115V 50HZ | 1 | 1 |
| | | Stator 1-phase 50 Hz 2-poles 115V Thermal contact | | |
| 19 | 84 03 26 | Motor switch 230V 50HZ | 1 | 1 |
| | | Stator 1-phase 50 Hz 2-poles 230V-240V | | |
| 19 | 84 03 29 | Motor switch 115V 60HZ | 1 | 1 |
| | | Stator 1-phase 60 Hz 2-poles 115V Thermal contact | | |
| 19 | 84 03 32 | Motor switch 230V 60HZ | 1 | 1 |
| | | Stator 1-phase 60 Hz 2-poles 220V-230V Thermal contact | | |
| 20 | 82 74 73 | O-ring 99.5X3.0 NBR | 1 | 1 |
| 21 | 760 55 00 | Stator housing | 1 | 1 |
| 22 | 690 41 01 | Stator 12-05-2b | 1 | 1 |
| | | 1-phase 50 Hz 2-poles 115V Thermal contact | | |
| | | 1-phase 60 Hz 2-poles 115V Thermal contact | | |
| 22 | 690 41 02 | Stator 12-05-2b | 1 | 1 |
| | | Stator 1-phase 50 Hz 2-poles 230V-240V Stator 1-phase 60 Hz 2-poles 220V-230V Thermal contact | | |
| 23 | 82 56 23 | Spring washer 31.5X25X0.35 | 1 | 1 |
| 24 | 82 77 19 | O-ring 26.0X1.2 NBR | 1 | 1 |
| 25 | 83 51 47 | Ball bearing 12X32X10 | 1 | 1 |
| 26 | 761 02 00 | Shaft unit | 1 | 1 |
| 27 | 83 32 42 | Ball bearing 15X35X11 | 1 | 1 |
| 28 | 761 54 00 | Bearing housing | 1 | 1 |
| 29 | 82 74 76 | O-ring 114.5X3.0 NBR | 2 | 2 |
| 30 | 82 74 74 | O-ring 104.5X3.0 NBR | 1 | 1 |
| 31 | 82 60 84 | Retaining ring | 1 | 1 |
| 32 | 561 48 01 | Oil housing | 1 | 1 |
| 33 | 761 56 00 | Washer | 1 | 1 |
| 34 | 561 54 00 | Wear protection | 1 | 1 |
| 35 | 561 53 10 | Torque flow impeller | 1 | 1 |
| | | MT 50Hz 1-phase | | |
| 35 | 561 53 11 | Torque flow impeller | 1 | 1 |
| | | MT 60Hz 1-phase | | |
| 36 | 82 37 09 | Plain washer | 1 | 1 |
| 37 | 625 38 00 | Diffuser unit | 1 | 1 |
| 38 | 82 73 82 | O-ring 10.3X2.4 NBR | 1 | |
| 39 | 561 50 01 | Inspection screw | 1 | |
| 40 | 661 35 00 | Strainer | 1 | |
| 41 | 760 59 00 | Barrel nut | 3 | |
| 41 | 760 59 01 | Barrel nut | | 3 |
| 42 | 82 37 93 | Plain washer 9021-6,4X18X1,6 | 3 | |
| 43 | 791 67 00 | Low-suction cuff | | 1 |
| 44 | 791 68 00 | Strainer low-suction | | 1 |
| 45 | 791 69 00 | Valve | | 1 |
| 46 | 82 78 35 | O-ring 175X3 NBR | | 1 |

| Pos. No | Part. No | Denomination | Qty/Version | |
|---------|----------------|-----------------------------|-------------|-----|
| | | | 212 | 230 |
| 800 | 769 66 00 | O-ring kit | 1 | 1 |
| 803 | 714 85 00 | Discharge conn. kit 2" | 1 | 1 |
| 803 | 714 85 01 | Discharge conn. kit NPSM 2" | 1 | 1 |
| 803 | 714 85 02 | Discharge conn. kit G2" | 1 | 1 |
| 804 | 618 17 00 | Ball bearing kit | 1 | 1 |
| | 804,1 82 56 23 | Spring washer 31.5X25X0.35 | 1 | 1 |
| | 804,2 82 77 19 | O-ring 26.0X1.2 NBR | 1 | 1 |
| | 804,3 83 32 42 | Ball bearing 15X35X11 | 1 | 1 |
| | 804,4 83 51 47 | Ball bearing 12X32X10 | 1 | 1 |
| 805 | 769 67 00 | Impeller kit | 1 | 1 |
| | | 50Hz | | |
| 805 | 769 67 01 | Impeller kit | 1 | 1 |
| | | 60Hz | | |
| 806 | 618 16 00 | Seal kit COMPLETE | 1 | 1 |
| 807 | 621 02 00 | Outer seal kit | 1 | 1 |
| 808 | 769 68 00 | Diffusor kit | 1 | 1 |
| 809 | 800 23 00 | Low suction kit | | 1 |
| 814 | 761 32 00 | Level regulator kit EU | 1 | 1 |
| 814 | 761 32 01 | Level regulator kit CSA UL | 1 | 1 |
| 900 | 793 20 00 | Basic repair kit | 1 | |
| 903 | 633 07 00 | Low suction kit | 1 | |

Xylem |'zīləm|

- 1) The tissue in plants that brings water upward from the roots
- 2) A leading global water technology company

We're a global team unified in a common purpose: creating innovative solutions to meet our world's water needs. Developing new technologies that will improve the way water is used, conserved, and re-used in the future is central to our work. We move, treat, analyze, and return water to the environment, and we help people use water efficiently, in their homes, buildings, factories and farms. In more than 150 countries, we have strong, long-standing relationships with customers who know us for our powerful combination of leading product brands and applications expertise, backed by a legacy of innovation.

For more information on how Xylem can help you, go to xyleminc.com

Refer to www.xylemwatersolutions.com/contacts/ for contact details of your local sales and service representative.



Xylem Water Solutions Global
Services AB
361 80 Emmaboda
Sweden
Tel: +46-471-24 70 00
Fax: +46-471-24 47 01
<http://tpi.xyleminc.com>

Visit our Web site for the latest version of this document and more information

The original instruction is in English. All non-English instructions are translations of the original instruction.

© 2012 Xylem Inc